

# REXNORD® AEROSPACE REXLON LINER SERVICES

FULL REPAIR AND LINER ONLY  
APPLICATIONS



Rexnord Aerospace — preferred OEM and aftermarket services provider for bearings, bearing liners, spline gears, and mechanical seals. Since 1946, Rexnord Aerospace has satisfied the needs and critical demands of the aerospace industry with exceptional, high-quality products and innovative engineering solutions. With our FAR 145 repair station capabilities and an extensive list of PMAs, CMM and DER repairs to help lower your cost of maintenance. Finally, we have a dedicated aftermarket services engineering team to work closely with our customers developing optimal solutions for our customers' needs.

## WHAT IS REXLON LINER?

Rexlon 2000® Type III and Rexlon 2000 LF are polymeric composite self lubrication materials. Liners:

- Used in high load carrying moving components requiring low friction and low torque.
- Greasing and additional lubrication is not necessary
- Machineable and honeable after application
- Can be applied to most metallic and some non-metallic surfaces

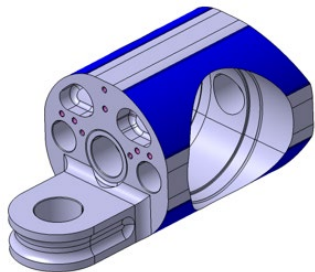
## WHY REXLON:

- Industry leading low friction and wear properties
- Excellent static and dynamic properties at high load
- Excellent properties at high temperature

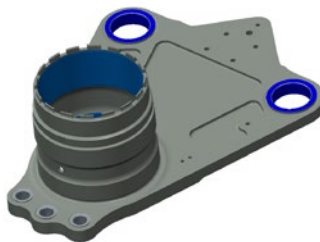
## WHAT WE OFFER:

- Extensive portfolio of PMA (Identity and T&C), CMM and DER offerings at over 2000 components
- All components manufactured in the US to OEM specifications
- With our FAR 145 repair station capabilities and our extensive list PMAs, DER repairs we are well positioned to lower your cost of maintenance
- Strong engineering services with most PMAs/DERs developed within 6 months
- Vast portfolio of Rexnord installation and removal tools >2500 P/Ns
- Industry best lead times
- Flexibility to support customer's specific liner needs

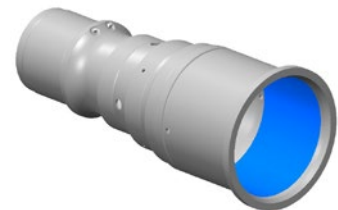
## APPLICATION EXAMPLES:



Tow Fitting



Steering Sleeve



Trunnion Housing

# REXNORD® AEROSPACE REXLON LINER SERVICES

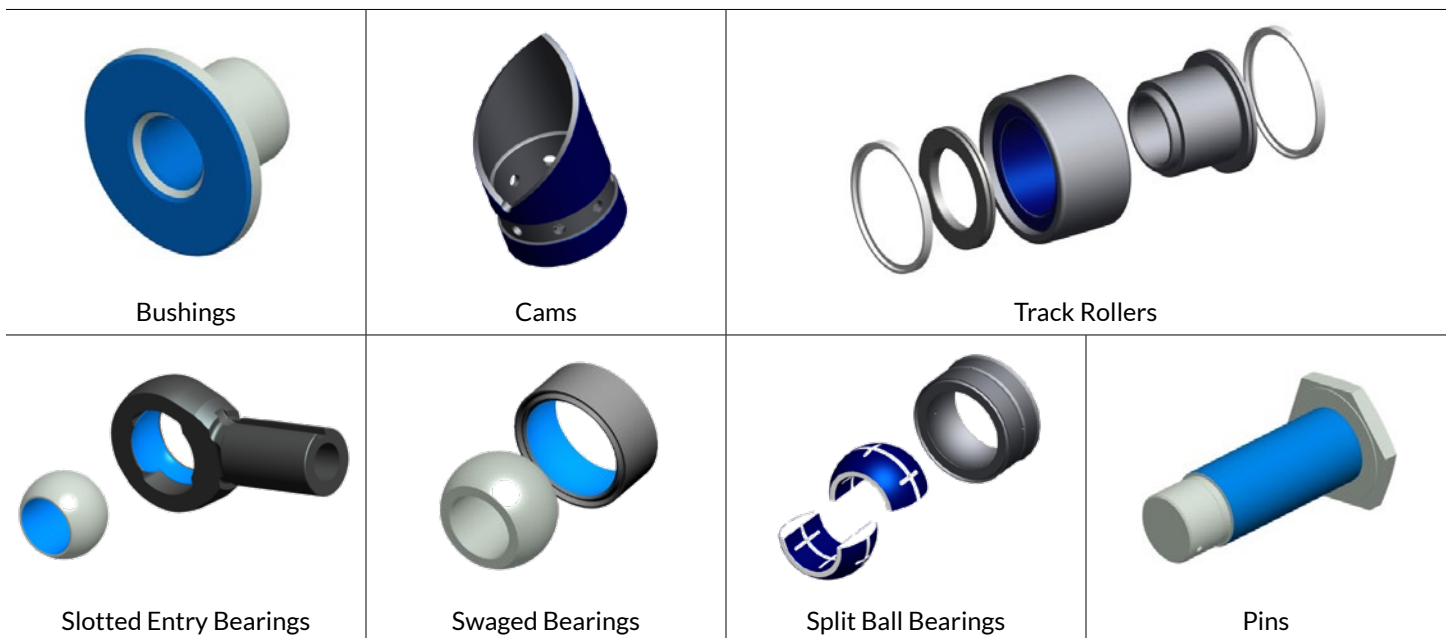
## BROAD PLATFORMS THAT CAN BENEFIT FROM REXLON

<b>Airframe - Fixed Wing - Rotary Wing</b>	Landing gear, actuators, control rods Swash plate controls
<b>Jet Engines</b>	Engine controls
<b>Industrial Machinery</b>	Toggle mechanisms, butterfly valves
<b>Off-Road Vehicles</b>	Steering linkage, thrust bearing
<b>Cargo Handling</b>	Cargo rollers
<b>Railroads</b>	Hand brakes & couplers
<b>Energy Systems</b>	Stationary engine controls

## SPECIFICATIONS FOR REXLON REPAIRS:

SAE AS81934 – Approved  
 SAE AS81820 – Approved  
 BMS 3-39 – Approved  
 FAA FAR145 – Approved  
 EN2288 – *Pending*  
 EN2311 – *Pending*

## REXLON CAN BE APPLIED TO ALL BEARING SIZES AND SHAPES



**Motion Control Solutions  
Regal Rexnord**

Contact us: [aerospace.rexnord.com/contact](https://aerospace.rexnord.com/contact)

[regalrexnord.com](https://regalrexnord.com)

The proper selection and application of products and components, including assuring that the product is safe for its intended use, are the responsibility of the customer. To view our Application Considerations, please visit <https://www.regalrexnord.com/Application-Considerations>. To view our Standard Terms and Conditions of Sale, please visit <https://www.regalrexnord.com/Terms-and-Conditions-of-Sale> (which may redirect to other website locations based on product family).

Since 1946, Rexnord Aerospace has satisfied the needs and critical demands of the aerospace industry with exceptional, high-quality products and innovative engineering. Choose Rexnord Aerospace products and solutions for your designs. Speak with our engineering sales staff to address your questions and design inquiries.

"Regal Rexnord" is not indicative of legal entity. Refer to product purchase documentation for the applicable legal entity. Regal Rexnord, Rexnord and Rexlon 2000 are trademarks of Regal Rexnord Corporation or one of its affiliated companies. © 2022 Regal Rexnord Corporation, All Rights Reserved. MCSSP22158E • Form# 10550E

